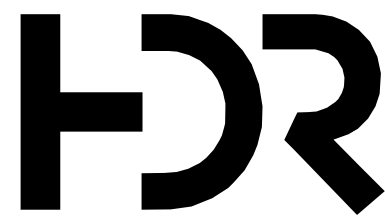
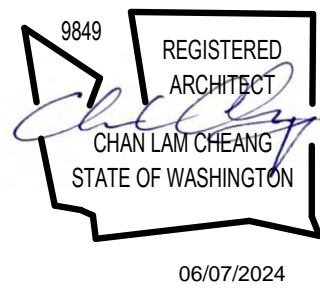


Autodesk Docs/100306182_Olympic_View_New_Well_Assist_2022/10030618-00-S.rvt
6/4/2024 2:24:54 PM



11/3/2023	ISSUE FOR BIDDING	
ISSUE	DATE	DESCRIPTION

PROJECT MANAGER		Pierre Kwan
CIVIL	P. KWAN	
STRUCTURAL	M. HUAZI	
ARCHITECTURAL	C. CHEANG	
PROCESS	P. KWAN	
MECHANICAL	K. SUTTON	
ELECTRICAL	O. AGUSTSSON	
INSTRUMENTATION	O. AGUSTSSON	
PROJECT NUMBER		150-420



OLYMPIC VIEW WATER
AND SEWER DISTRICT

228th Street SW
Well Treatment Facility

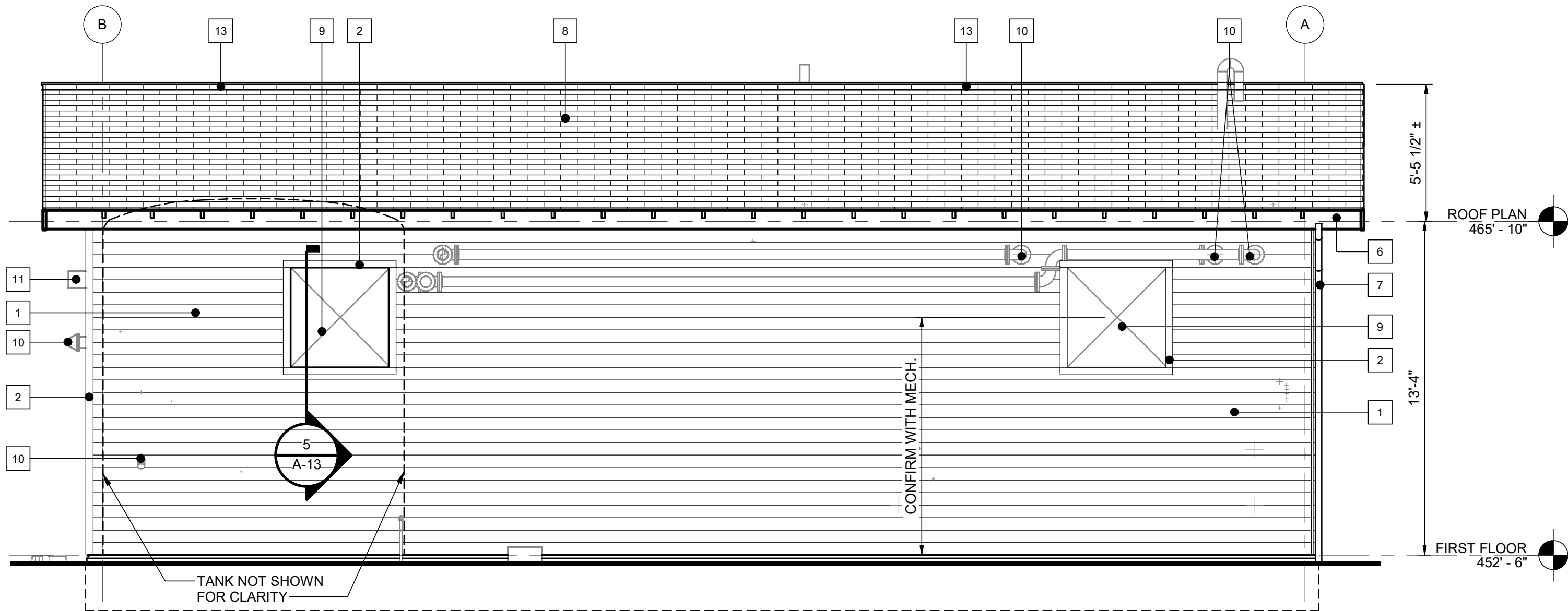


FILENAME	10030618-00-S.rvt
SCALE	AS NOTED

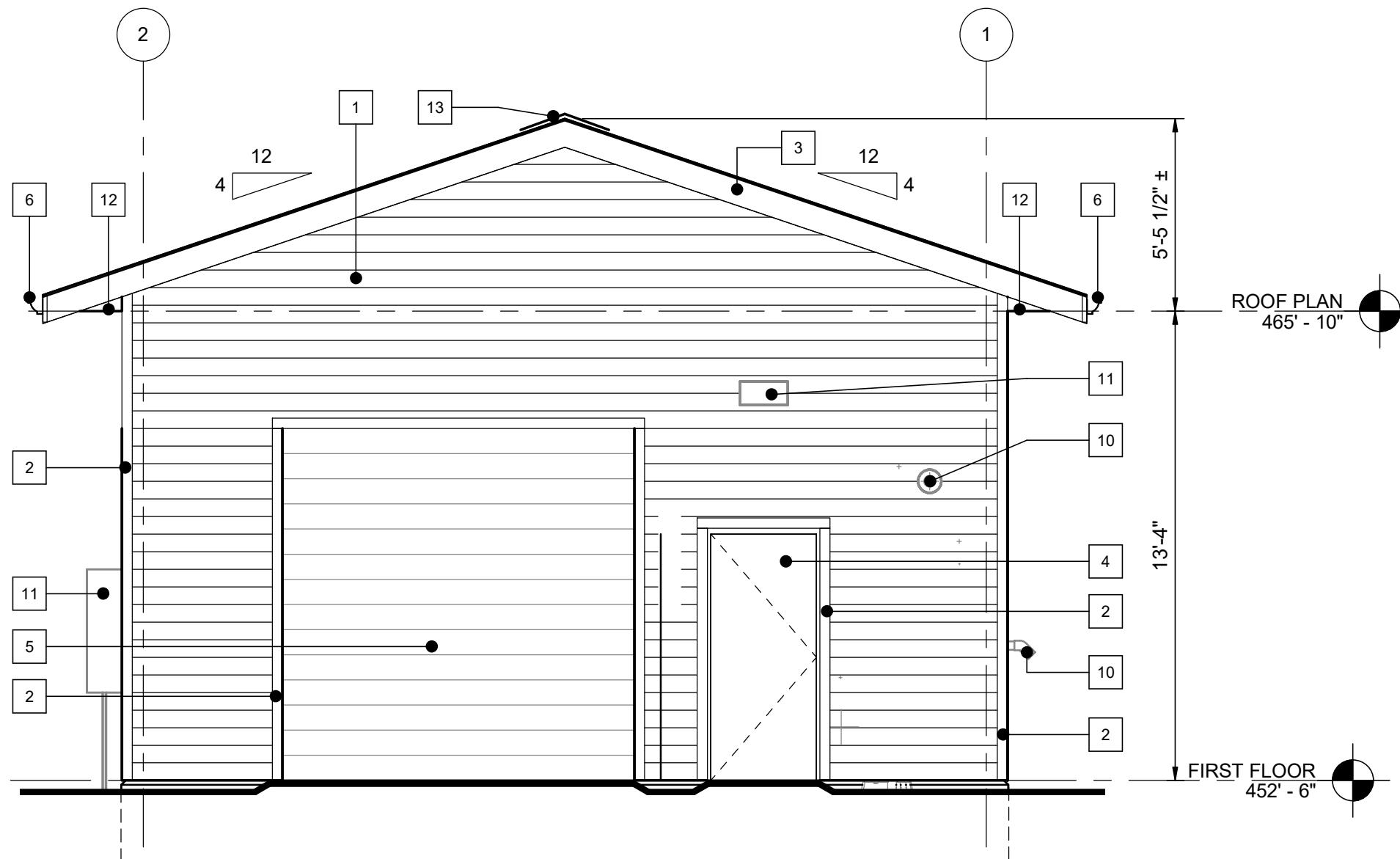
SHEET	A-11
-------	------

EXTERIOR ELEVATION KEY TO MATERIALS

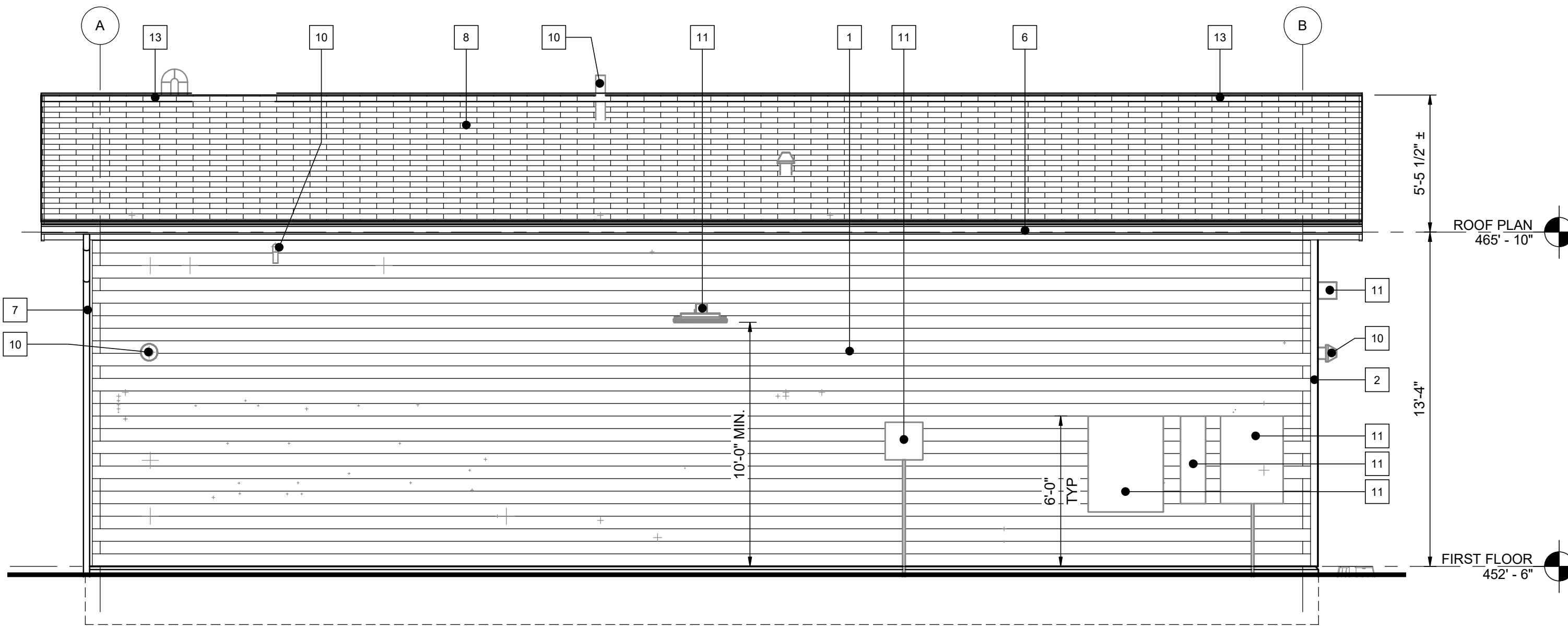
- | | |
|----|--|
| 1 | PRE-FINISHED FIBER CEMENT BOARD LAP SIDING |
| 2 | PRE-FINISHED FIBRE CEMENT BOARD TRIM |
| 3 | PRE-FINISHED FIBRE CEMENT BOARD FASCIA |
| 4 | PAINTED HOLLOW METAL DOOR & FRAME |
| 5 | PRE-FINISHED METAL ROLL-UP DOOR |
| 6 | PRE-FINISHED METAL RAIN GUTTER |
| 7 | PRE-FINISHED METAL RAINWATER LEADER |
| 8 | ASPHALT SHINGLE ROOFING |
| 9 | PRE-FINISHED METAL LOUVRES |
| 10 | MECHANICAL EQUIPMENT / PIPING |
| 11 | LIGHTING FIXTURE OR ELECTRICAL EQUIPMENT |
| 12 | PRE-FINISHED FIBER CEMENT BOARD PANEL |
| 13 | CONTINUOUS RIDGE VENT |



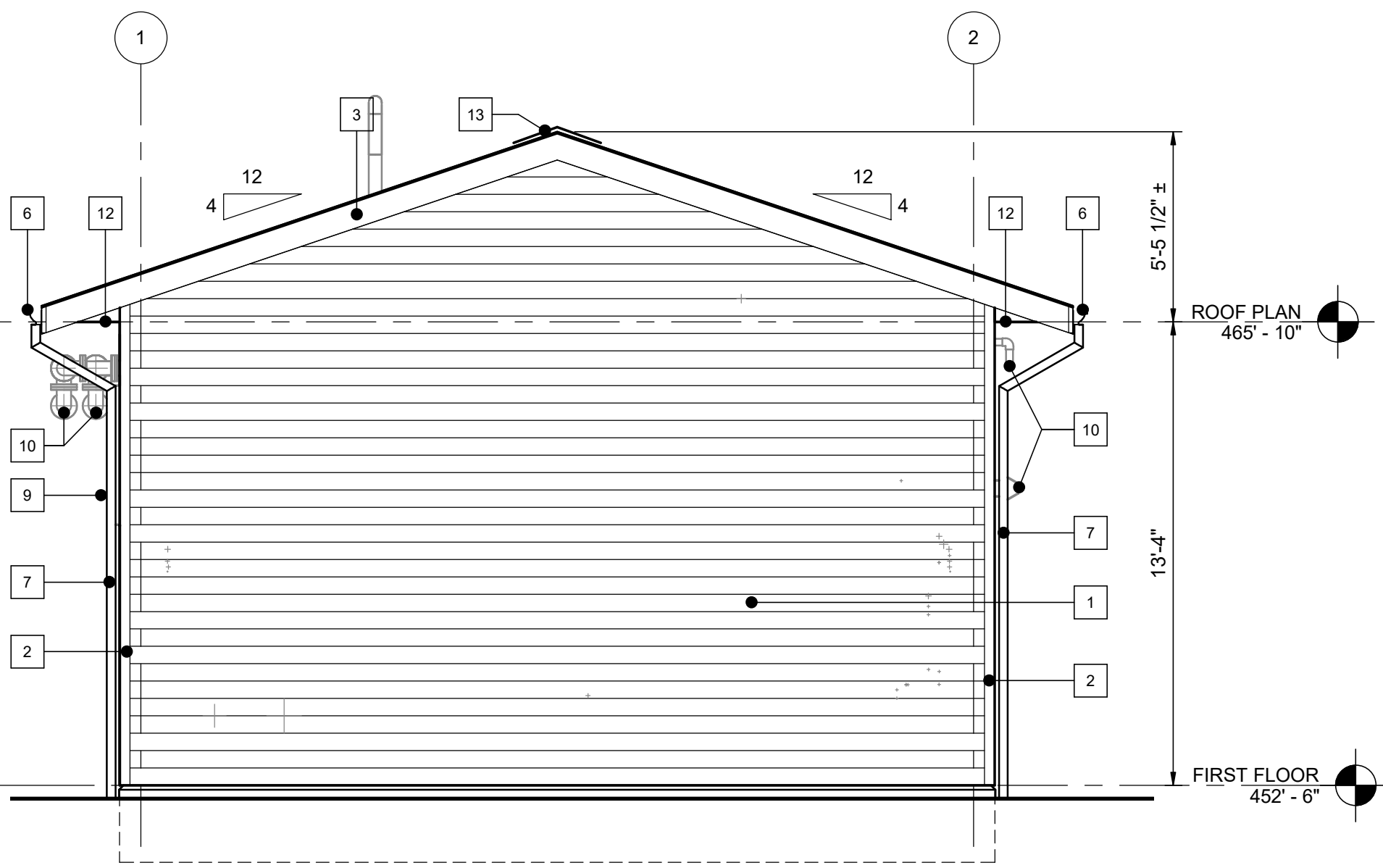
1 SOUTH ELEVATION
A-10 1/4" = 1'-0"



2 WEST ELEVATION
A-10 1/4" = 1'-0"



3 NORTH ELEVATION
A-10 1/4" = 1'-0"



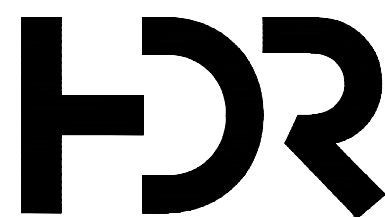
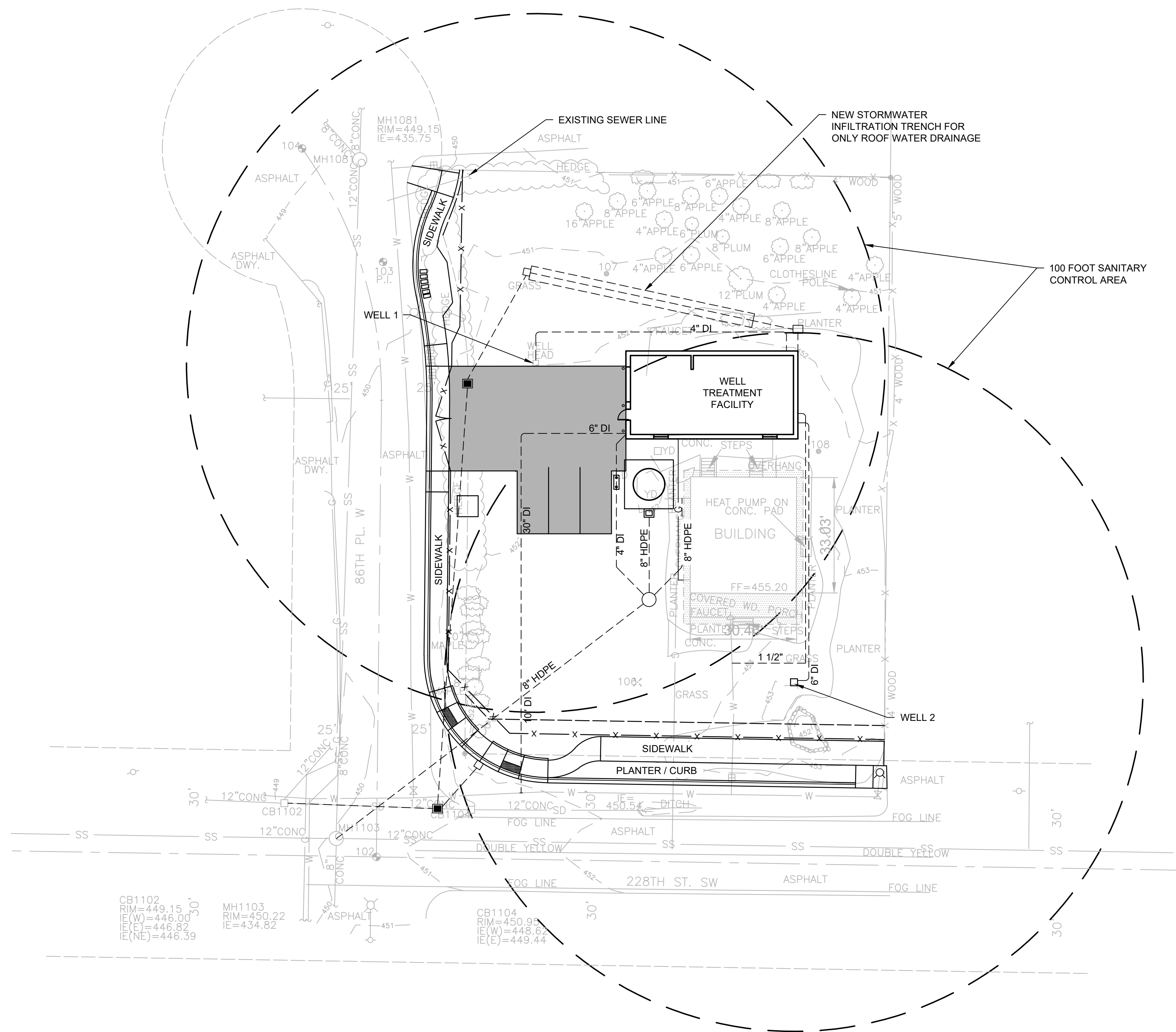
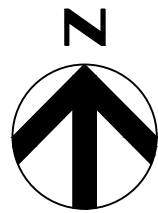
4 EAST ELEVATION
A-10 1/4" = 1'-0"



- 1 LANDSCAPING PLAN
SCALE: 1"=20'-0"

GENERAL NOTES:

- L-01**



ISSUE	DATE	DESCRIPTION
	2/29/2024	DOH APPROVED. ISSUE FOR BID

PROJECT MANAGER	Pierre Kwan
Civil	P. KWAN
Structural	M. HIJAZI
Architectural	C. CHEANG
Process	P. KWAN
HVAC, Plumbing	K. SUTTON
Electrical	O. AGUSTSSON
Instrumentation	O. AGUSTSSON
PROJECT NUMBER	000000010030618



**OLYMPIC VIEW WATER
AND SEWER DISTRICT**

**228th Street SW
Well Treatment Facility**



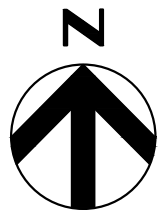
FILENAME | C-08.dwg
SCALE | 1"=20'

CIVIL

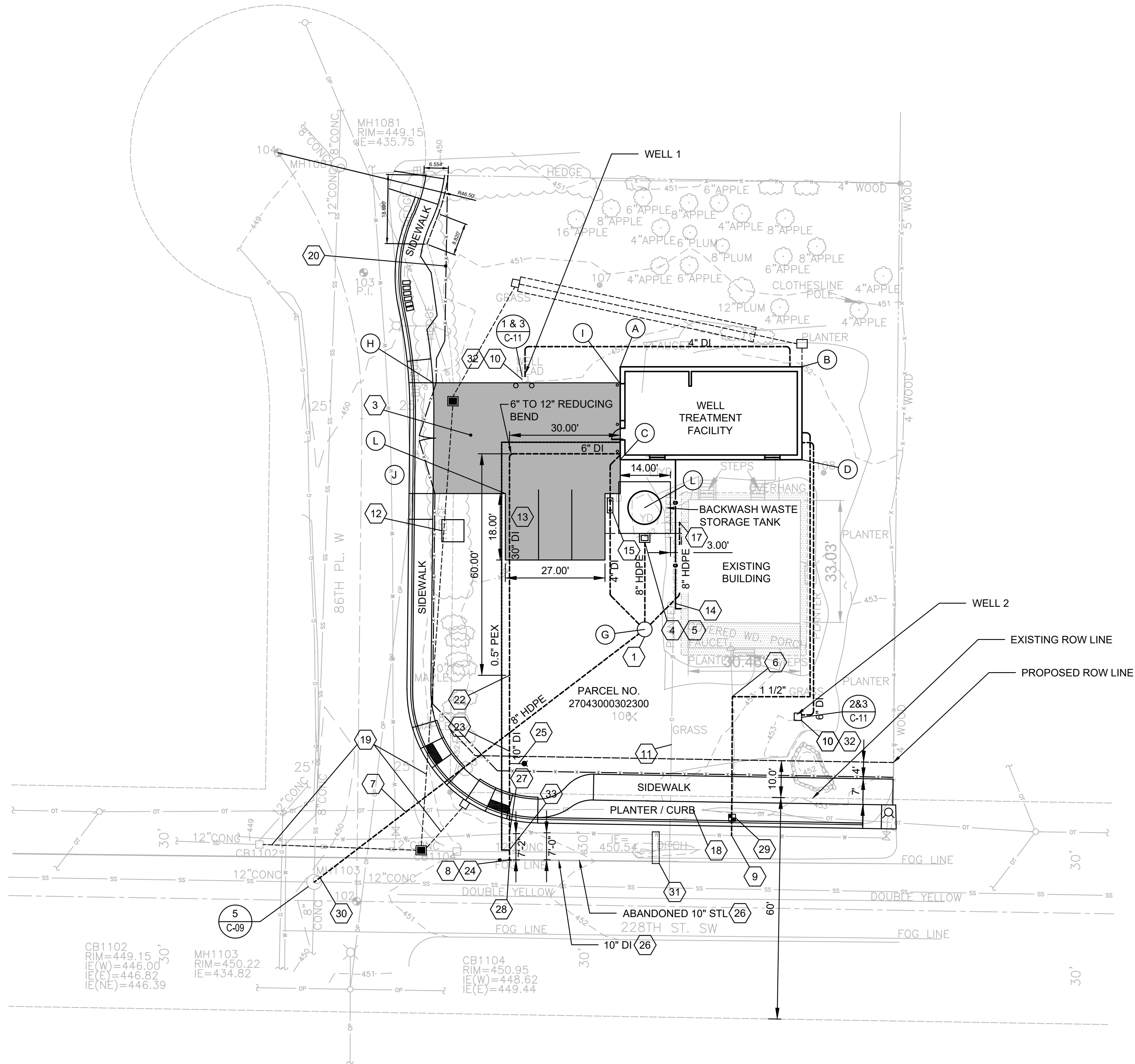
WELL FACILITY SANITARY CONTROL AREA

SHEET

C-08



COORDINATE TABLE			
	NORTHING	EASTING	DESCRIPTION
A	292834.7412	1267786.8679	NW CORNER OF BLDG.
B	292834.7412	1267836.0762	NW CORNER OF BLDG.
C	292809.5746	1267786.8679	SW CORNER OF BLDG.
D	292809.5746	1267836.0762	SE CORNER OF BLDG.
E	-	-	NOT USED
F	-	-	NOT USED
G	292763.5872	1267793.4470	CENTER OF MAINTENANCE HOLE
H	292830.4061	1267736.1300	NW CORNER OF PARKING
I	292830.1787	1267786.8679	NE CORNER OF PARKING
J	292782.4077	1267755.7157	SW CORNER OF PARKING
K	292782.4077	1267782.7157	SE CORNER OF PARKING
L	292800.4077	1267755.7157	MIDDLE CORNER OF PARKING
M	1267793.4581	1267793.4581	CENTER OF BACKWASH



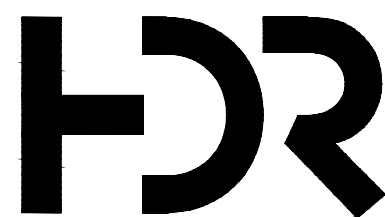
1 SITE AND UTILITY PLAN
SCALE: 1"=20'-0"

GENERAL NOTES:

- EXISTING CONTOUR INFORMATION SHOWN IS AT ONE (1) FOOT INTERVALS.

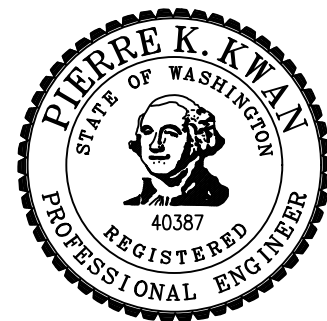
KEY NOTES:

- 48" MAINTENANCE HOLE PER DETAIL 4/C-09.
- NOT USED.
- ASPHALT CONCRETE PAVEMENT. SEE SHEET C-07.
- CATCH BASIN FOR BACKWASH WASTE.
- AIR GAP.
- CONNECT EXISTING WATER SERVICE TO NEW WATER SERVICE LINE.
- ROUTE NEW 8" BWW LINE TO SANITARY SEWER MANHOLE M3-156.
- CUT EXISTING 10-INCH DI WATER MAIN AND INSTALL 10X10X10 DI TEE. ROLL TEE VERTICALLY AS NEEDED. INSTALL CONCRETE THRUST BLOCKING PER DISTRICT STANDARD DETAIL W-4.
- INSTALL 2" TAP ON EXISTING 8" CI WATER MAIN AND CONNECT NEW 1 1/2" WATER METER AND SETTER WITH WATER SERVICE LINE TO BUILDING EXISTING TAP TO BE PLUGGED. REMOVE EXISTING WATER SERVICE LINE AS NEEDED.
- INSTALL NEW ENCLOSURE OVER WELLS 1 & 2.
- APPROXIMATE LOCATION OF GAS LINE.
- TRANSFORMER TO BE INSTALLED BY SNOHOMISH COUNTY PUD. CONTRACTOR IS RESPONSIBLE FOR THE COORDINATION ON THE NEW ELECTRICAL SERVICE AND TRANSFORMER INSTALLATION WITH SNOHOMISH COUNTY PUD.
- PARKING STALLS.
- INSTALL 1 INCH NATURAL GAS LINE FROM NEW METER LOCATION TO TREATMENT FACILITY.
- TWO-WAY CLEAN OUT TO GRADE.
- NOT USED.
- CUT EXISTING HOUSE SEWER PIPE WITHIN 18-INCHES OF HOUSE. CONNECT SEWER TO NEW HDPE PIPE WITH ROMAC INDUSTRIES ALPHA RESTRAINED COUPLING.
- APPROXIMATE POLE LOCATION.
- SEE SHEET C-07 FOR EXTENT OF SAWCUTTING AND PAVEMENT RESTORATION.
- CHAIN LINK FENCE PER DETAIL 4/C-12.
- 6X12 REDUCING ELBOW WITH 12X30 REDUCER. INSTALL CONCRETE THRUST BLOCKING PER DISTRICT STANDARD DETAIL W-4.
- 10X12 REDUCER AND 12X30 REDUCER.
- 18-INCHES (MINIMUM) CLEARANCE BETWEEN INVERT OF DI PIPE AND CROWN OF HDPE PIPE.
- INSTALL 10" GATE VALVE AT LOWER ELEVATION UPSTREAM OF TEE. BURIED GATE VALVE WITH VALVE BOX AND VALVE BOX LID PER DISTRICT APPROVED MATERIALS LIST, DATED OCT. 24, 2018.
- INSTALL FIRE HYDRANT ASSEMBLY PER DISTRICT STANDARD DETAIL W-2.
- EXISTING 10" DI WATER MAIN AND EXISTING ABANDONED 10" STL PIPE APPROXIMATE LOCATION IS SHOWN, CONTRACTOR TO FIELD VERIFY.
- 10" DI SHALL BE INSTALLED AND CROSS UNDER 8" CI WITH AT LEAST 18" SEPARATION BETWEEN EXTERIOR WALLS.
- CUT 10" ABANDONED STEEL PIPE AS NEEDED CAP ENDS AND REMOVE PORTION NEEDED FOR 10" DUCTILE IRON PIPE APPURTENANCES. CONTRACTOR SHALL VERIFY HORIZONTAL AND VERTICAL LOCATION OF UTILITIES.
- REMOVE EXISTING METER BOX AND APPURTENANCES AND REPLACE WITH PROPOSED METER BOX. REFER OVWSD APPROVED MATERIALS LIST FOR METER BOX TYPE.
- REMOVE LADDER RUNGS AS NEEDED TO AVOID CONFLICT WITH INTERNAL DROP. INSTALL HANGING STAINLESS STEEL CHAINLINK STYLE LADDER TO MANHOLE FOR ACCESS.
- POTHOLING EXPLORATIONS WAS CONDUCTED TO DETERMINE DEPTH OF EXISTING UTILITIES:
8" CL TOP OF PIPE = 3'-3"
10" STEEL TOP OF PIPE = 4'-1"
10" DI TOP OF PIPE = 3'-1"
- WELL CASINGS SHALL BE VIDEO INSPECTED PRIOR TO PUMP INSTALLATION. VIDEO INSPECTION EQUIPMENT INCLUDING CAMERA OR CABLE SHALL NOT HAVE BEEN PREVIOUSLY USED IN A SEWER APPLICATION.
- ATTACH SADDLE TAP WITH 1/2" PLUG VALVE-STYLE BRASS CORP STOP ON 10-FW WITH 1/2" THREADED X PEX BARB FITTING TO CONNECT PEX PIPE TO CORP STOP.



2/29/2024 DOH APPROVED. ISSUE FOR BID		
ISSUE	DATE	DESCRIPTION

PROJECT MANAGER Pierre Kwan	
Civil	P. KWAN
Structural	M. HIJAZI
Architectural	C. CHEANG
Process	P. KWAN
HVAC, Plumbing	K. SUTTON
Electrical	O. AGUSTSSON
Instrumentation	O. AGUSTSSON
PROJECT NUMBER	000000010030618



OLYMPIC VIEW WATER
AND SEWER DISTRICT

228th Street SW
Well Treatment Facility

CIVIL
WELL FACILITY SITE AND UTILITY PLAN



FILENAME C-06.dwg
SCALE AS SHOWN

SHEET
C-06